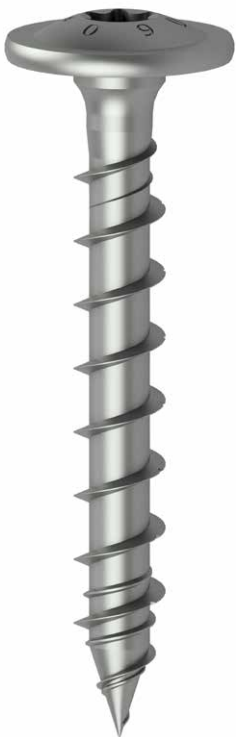


# StarDrive GPR® Post screw

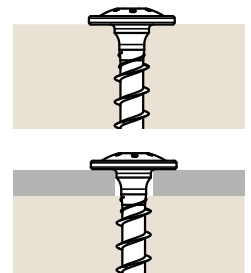
Highest quality - innovative technology

The StarDrive GPR® post screw is a full thread screw that expands our proven StarDrive GPR® assortment. The StarDrive GPR® post screw is specially designed for metal/wood connections. The underhead shoulder guarantees a perfect fit in the metal. The zinc nickel 1000+ surface is the ideal complement to hot-dip galvanised metal parts and is also suitable for use in demanding conditions.



## Washer head

- > The washer head eliminates the need to use a separate washer
- > Reduced assembly times - higher pull-through values



## Underhead shoulder

- > Centres the screw and guarantees a secure fit in the metal

## Thread, tip

- > Coarse thread including patented follower thread, rolled out to the tip
- > Faster screwing processes
- > Minimised blast effect
- > Lower screw-in torque
- > No pre-drilling necessary



Post screw\*

Length [mm]



Drive	40	60
T40	Ø 8.0	

■ Zinc nickel 1000+  
Chrome [VI] free

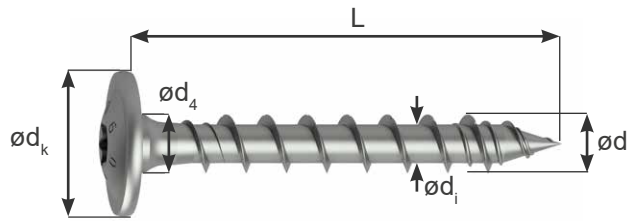


\*Special lengths available upon request

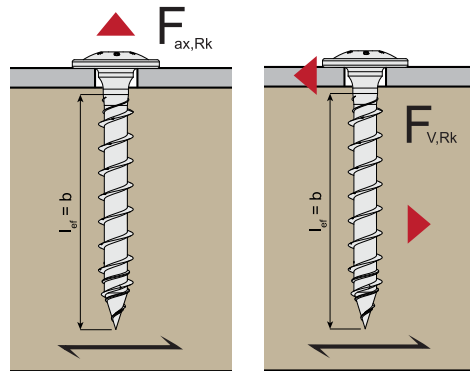


**Characteristics and values for C24**

<b>d</b>	[mm]	<b>ø 8</b>
<b>d<sub>k</sub></b>	[mm]	20.0
<b>d<sub>i</sub></b>	[mm]	5.30
<b>d<sub>4</sub></b>	[mm]	7.8
<b>f<sub>ax,90,k</sub></b>	[N/mm <sup>2</sup> ]	10.7
<b>f<sub>head,k</sub></b>	[N/mm <sup>2</sup> ]	17.6
<b>F<sub>tens,k</sub></b>	[kN]	22.0
<b>M<sub>y,k</sub></b>	[Nmm]	22 600



Values for C24 ( $\rho_k=350\text{kg/m}^3$ ), axial axis to grain: 30° - 90°,  
 $F_{ax}$  = thread withdrawal force,  
 $F_v$  = shear force (// to grain 0° – ⊥ to grain 90°),  
 $F_{V,Rk,thin}$  = steel plate  $t \leq d/2$ ,  
 $F_{V,Rk,thick}$  = steel plate  $t \geq d$



		AXIAL WITHDRAWAL		SHEAR			
		METAL - TIMBER					
ø	[mm]	L/b	F <sub>ax,Rk</sub>	F <sub>ax,ASD</sub>	F <sub>v,Rk,thin</sub>	F <sub>v,Rk,thick</sub>	F <sub>v,ASD</sub>
					[kN]	[kN]	[kN]
ø 8.0	8.0	40/32	2.74	1.28	1.57	3.24	0.68
	8.0	50/42	3.60	1.68	2.07	3.76	0.89
	8.0	60/52	4.45	2.08	2.56	4.36	1.11

Type and printing errors reserved. The values stated are meant to serve as planning guides; projects should only be undertaken by authorised professionals.

